

BRINGING OUR PAST INTO OUR FUTURE



HANA WAS WHAT WE DID

SCIENCES
AND
TECHNOLOGIES
OF
INTEGRATED
BIO-SYSTEMS
MANAGEMENT



**OHANA
WAS
WHO WE
DID IT
WITH**

FAMILY AS
UNIT OF
EDUCATION,
EMPLOYMENT,
AND SPIRITUALITY



RESTORATION
AS INTERVENTION





Triple Piko Analysis

Piko O:
Aligns with
Ancestral
Prerogatives



Triple Piko Analysis

Piko I:
Empowers
Contemporary
Generations



Triple Piko Analysis

Piko A:
Provides
Foundation For
Future
Abundance

SOCIAL ENTERPRISE THAT PRODUCES CONTEMPORARY & ANCESTRAL OUTCOMES

ELDERS

Generate revenue via
Enterprise while being empowered
by **Social** mission

PROGRAMMERS

Generate revenue via
Enterprise while being empowered
by **Social** mission

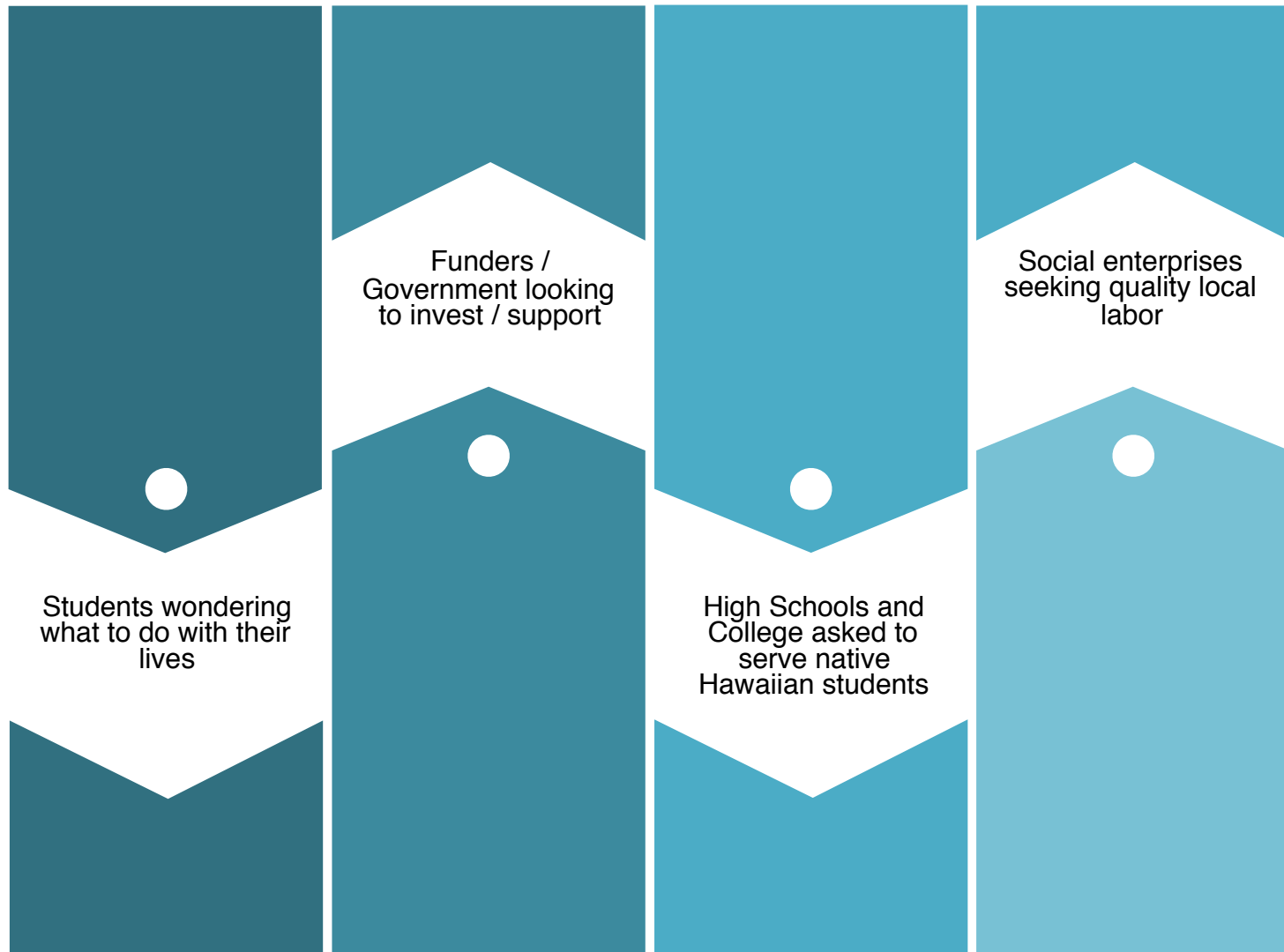
SWEAT EQUITY SCHOLARS

Generate revenue via
Enterprise while being empowered
by **Social** mission

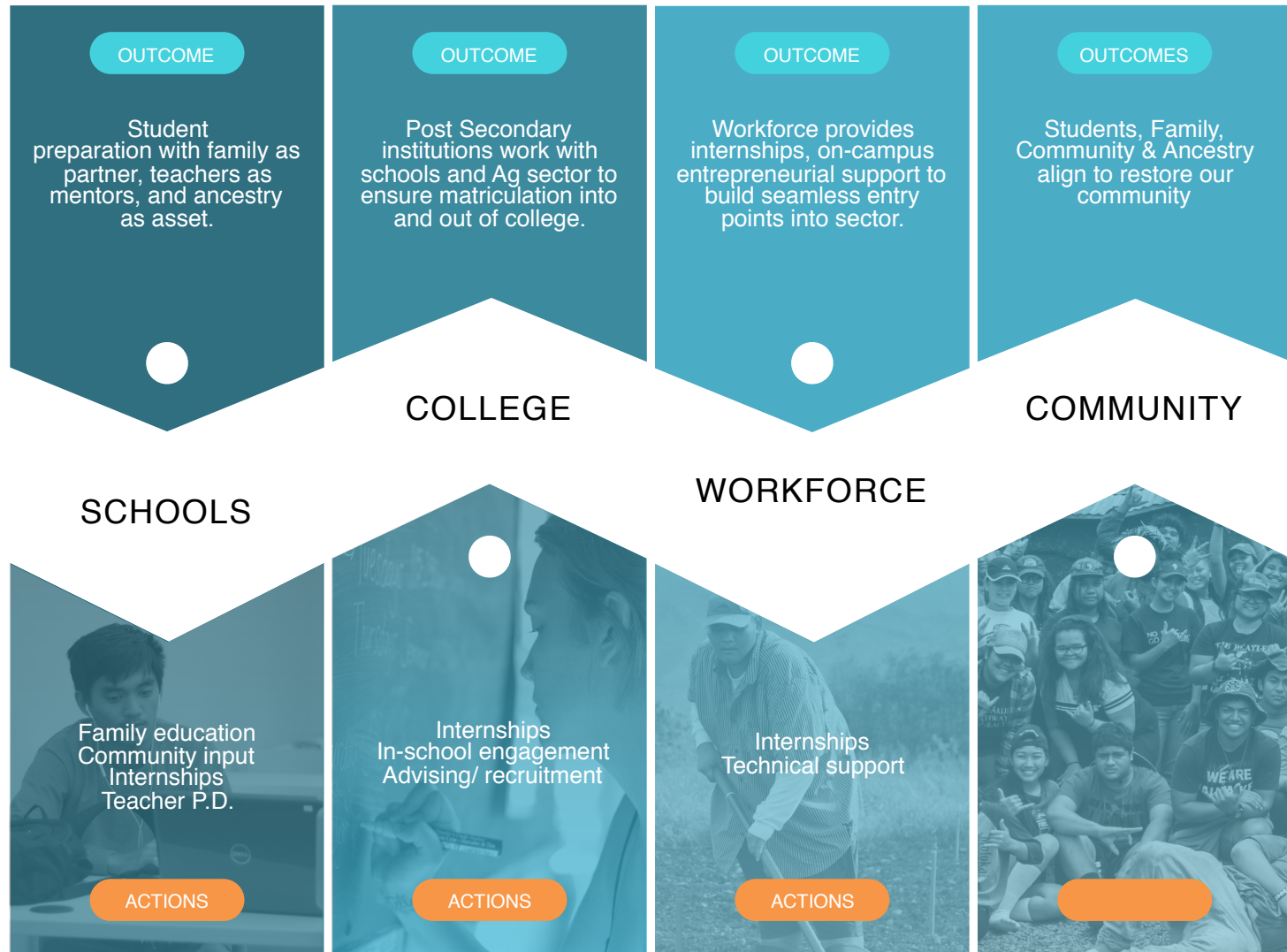


HOW
TO
DEPLOY:
AUWAI
CONSORTIUMS

OUR ALIGNMENT: FROM SILOED...



OUR ALIGNMENT: ...TO ALIGNED



OUTCOMES:

**ANCESTRAL SYSTEMS
SOLVING FOR
CONTEMPORARY
ISSUES**

YOUTH OUTCOMES

MA'O Intern College Degree Attainment

MA'O interns graduate at more than double the rate of their peers at Leeward Community College, while Native Hawaiian interns triple their chances of achieving their degree.



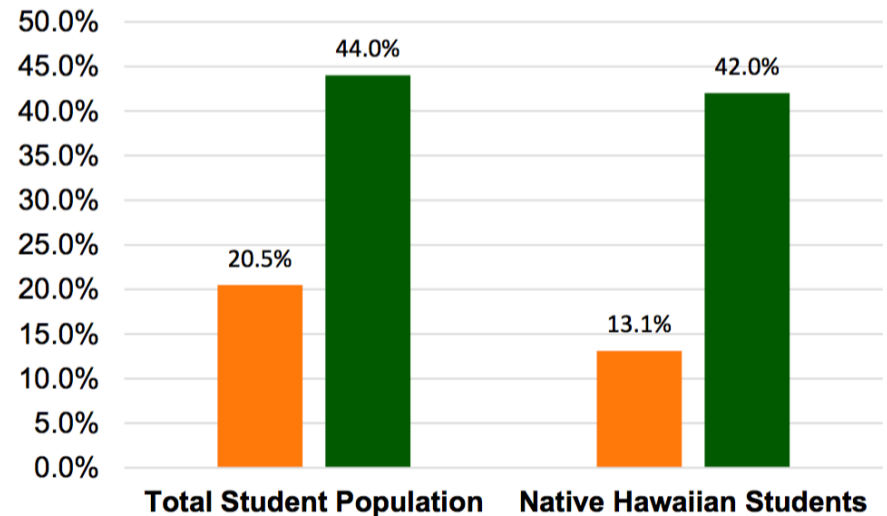
108 Associate's Degrees

25 Bachelor's Degrees

1 Master's Degree

Degrees attained by MA'O interns during and after their participation in the Youth Leadership Training (YLT) program.

Associate Degree Graduation Rate



Leeward Community College 2015

MA'O Youth Leadership Training (YLT) interns - cumulative

HEALTH OUTCOMES



Mauli Ola Study

Investigating the Gut Microbiome in Social Networks

- Addressing increased prevalence of chronic diseases among Hawai'i's unique populations, including Native Hawaiians and Pacific Islanders.
- Examining how social and economic networks influence individuals' choices and behaviors, leading to (un)healthy lifestyles.
- Exploring how MA'O, a community program not specifically designed around health, impacts the health of individuals, especially in the reduction of obesity and other cardiometabolic disorders.

120

Participants in first study cohort, all interns in MA'O Youth Leadership Training (YLT) program. Future study cohorts include additional interns and members of interns' social networks.

70%

Study cohort of Native Hawaiian ancestry

26

Median age of study cohort

50%

Reduction in lifetime risk of contracting T2 diabetes; measured after one year participation in the MA'O YLT internship program.

\$15,000

Reduced annual health care costs associated with diabetes alone, per individual who avoids contracting T2 diabetes.

Ka'ōnohi Farms

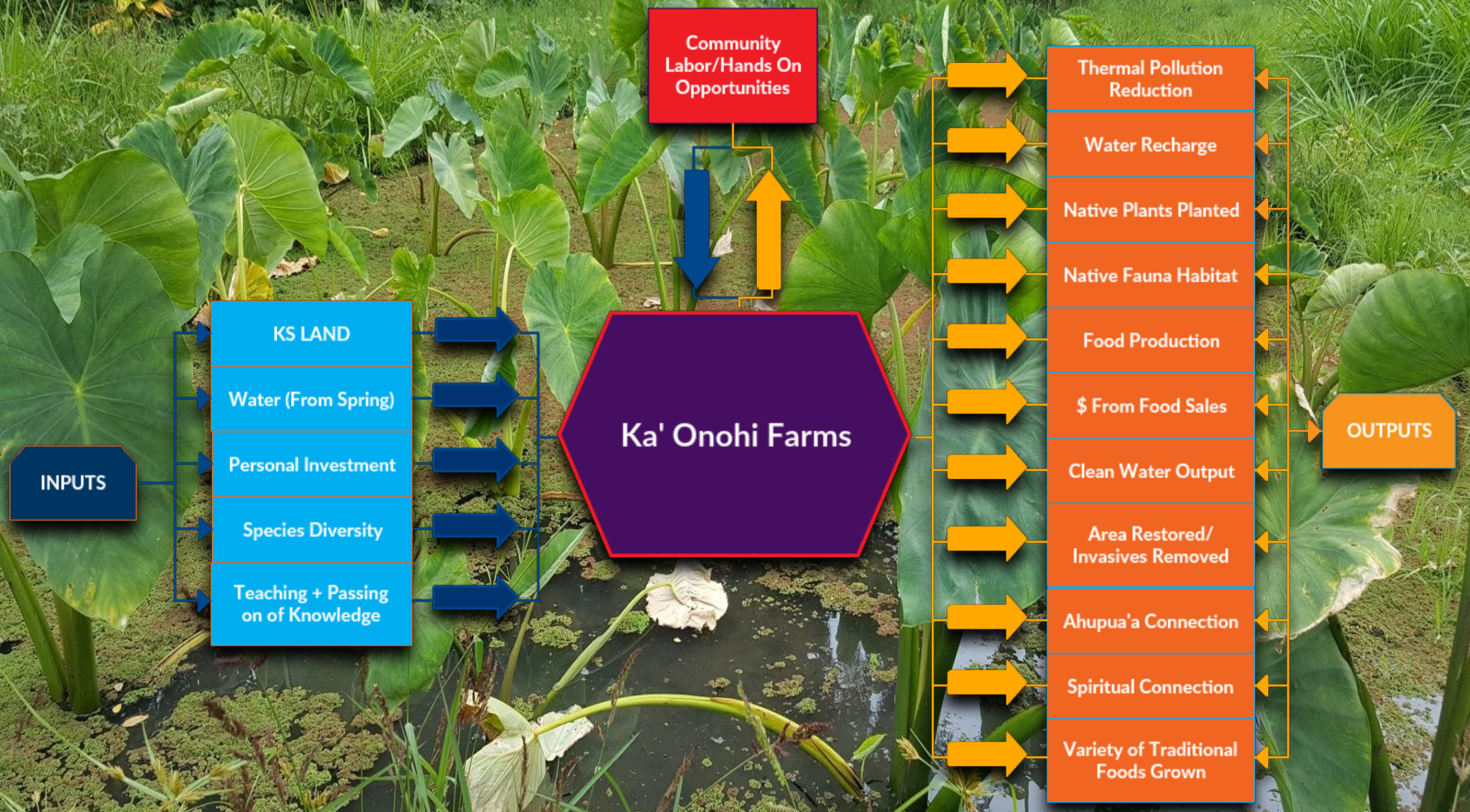
Hawaiian Cultural Practices Thriving
in an Urban Ahupua'a



PLAN 661: Collaboration Between Sectors
Kamuela Enos & Anne Smoke

The Stakeholders





[INTERNSHIP OPPORTUNITIES](#)[NEWS](#)[PURPLE PRIZE](#)[CONTACT](#)[DONATE](#)[ABOUT](#)

LOHELOHE I HONUA

Culturally-engaged, community-focused tech makers

[DONATE](#)[CONTACT](#)



thepurpleprize • [Follow](#)
University of Hawaii - West Oahu

thepurpleprize #Repost @purple_maia
with @get_repost

...

Startup Category:
Innovative I'a Kilo Practices for the
Contemporary Kia'i Loko –1st place

A cost-effective tool to document and
quantify fish at mākāhā (sluice gates) over
tidal, mahina (lunar) and seasonal cycles
using underwater cameras and machine
learning for better management and



2 likes

SEPTEMBER 19

[Log in](#) to like or comment.

...



UNIVERSITY of HAWAII'
WEST O'AHU



BACHELOR OF APPLIED SCIENCE
Sustainable Community
Food Systems (SCFS)



